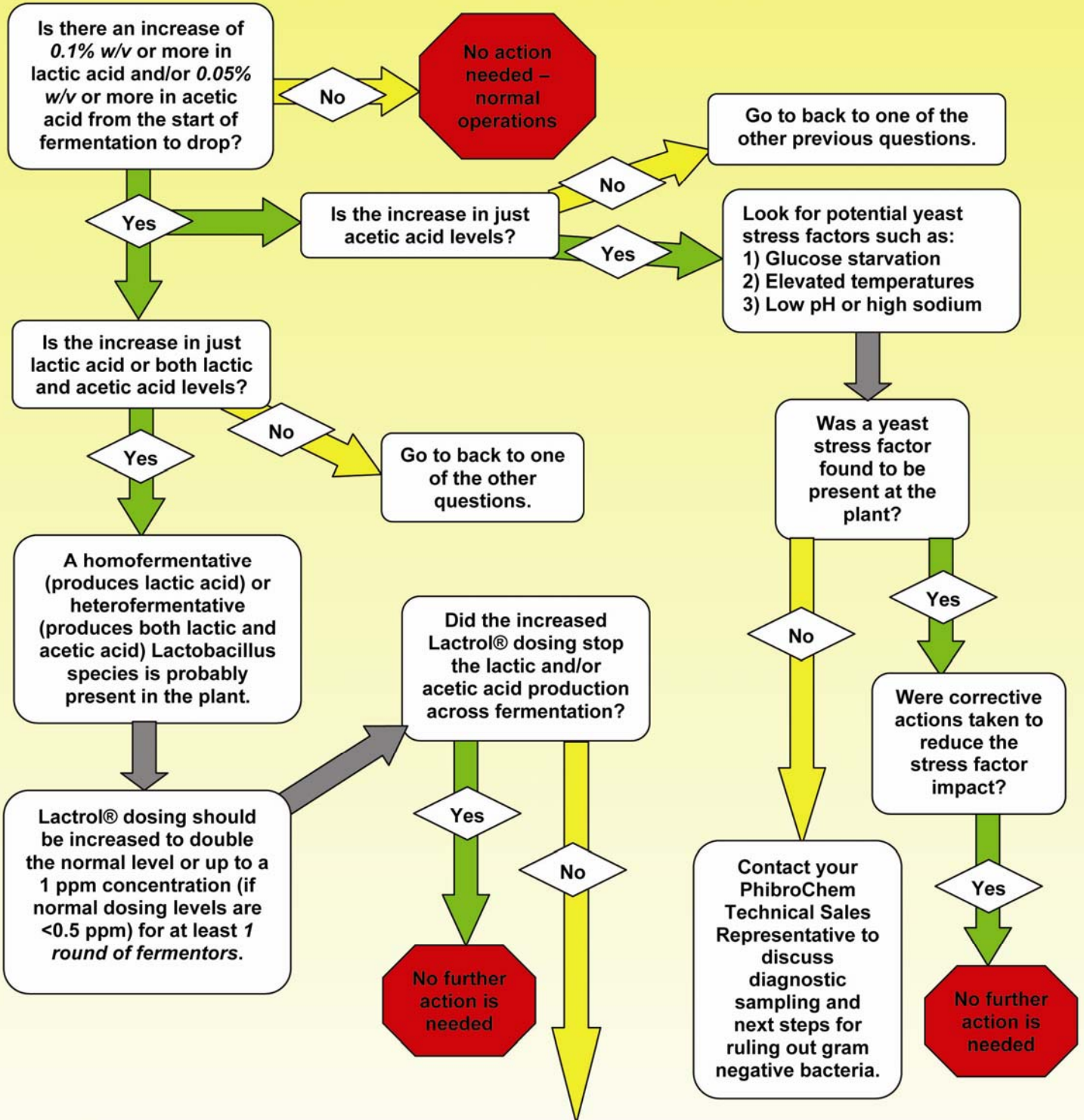


Plant Infection Resolution Protocol Flow Chart



Contact your PhibroChem Technical Sales Representative to:

- 1) Discuss your current plant process data
- 2) Determine potential areas of concern that could contribute to an infection
- 3) Decide on diagnostic kit sampling locations
- 4) After samples have been pulled, double Lactrol® dosing again for 1 round of fermentors



A Division of Phibro Animal Health Corporation

65 Challenger Road, Third Floor, Ridgefield Park, NJ 07660

1-800 223-0434 ▪ 201-329-7300 ▪ Fax: 201-329-7034

CHEMTREC EMERGENCY 1-800-424-9300

IMPORTANT NOTICE The information and statements herein are believed to be reliable, but are not to be construed as a warranty or representation for which we assume legal responsibility or as an assumption of duty on our part. Users should undertake sufficient verification and testing to determine the suitability for their own particular purpose of any information, products or vendors referred to herein. **NO EXPRESS OR IMPLIED WARRANTY, INCLUDING WARRANTY OF FITNESS FOR A PARTICULAR PURPOSE IS MADE.** Nothing herein is to be taken as permission, inducement or recommendation to practice any patented invention without a license.

TRADEMARK NOTICE The ® indicates a registered Trademark in the United States. The mark may also be registered, the subject of an application for registration or a trademark in other countries.